

DoorProtect Plus User Manual

Posted on April 20, 2022



DoorProtect Plus is a wireless opening, shock, and tilt detector, that operates within the Ajax security system, connecting via the protected [Jeweller](#) radio protocol. Is used inside premises. The communication range is up to 1,200 m line of sight. DoorProtect Plus can operate up to 5 years from a pre-installed battery and capable to detect more than 2 millions openings.

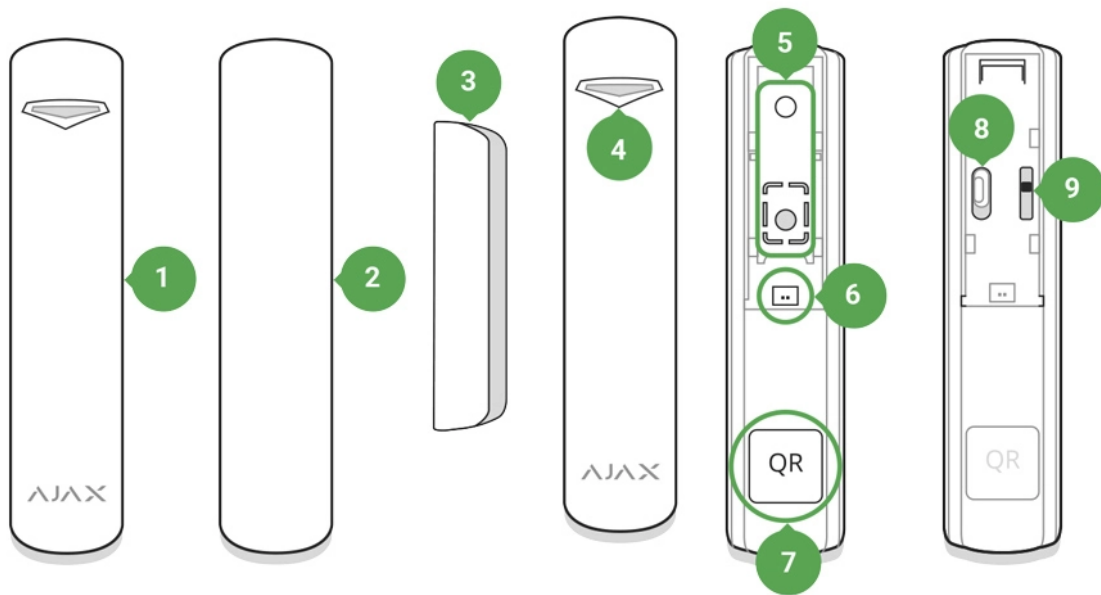
The user can configure the detector via the [Ajax app](#) for iOS, macOS, Windows, or Android. The app notifies the user of all events through push notifications, SMS, and calls (if activated).



DoorProtect Plus does not support connecting via the [Ajax uartBridge](#) or [Ajax ocBridge Plus](#) integration modules.

The Ajax security system can be connected to a central monitoring station of a security company.

Functional Elements



1. DoorProtect Plus
2. Big magnet (should be placed to the right of the detector)
3. Small magnet (should be placed to the right of the detector)
4. LED indicator
5. SmartBracket attachment panel (perforated part triggers the tamper button in case of any attempt to tear off the detector from the surface)
6. External detector connection socket
7. QR code
8. Device switch
9. Tamper button

Operating Principle

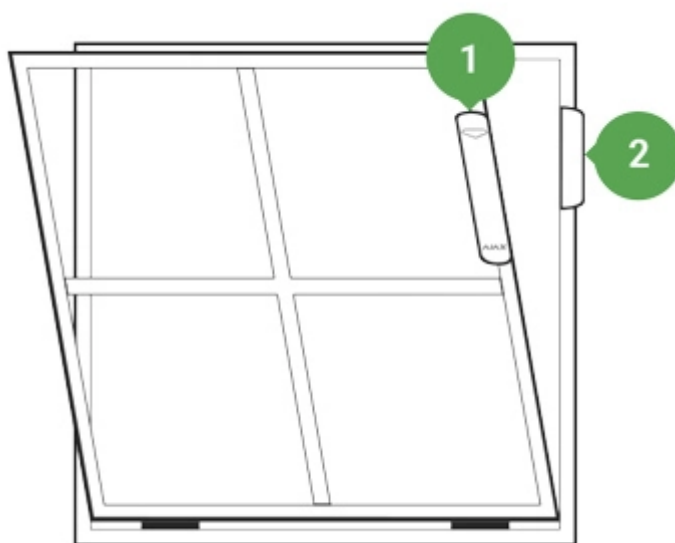
DoorProtect Plus consists of two parts: the detector and the constant magnet. The detector is equipped with the sealed contact reed relay, built-in accelerometer, and socket for a third-party wired detector.

Attach the magnet to the door frame, while the detector should be attached to the door's moving wing or sliding part. If the sealed contact reed relay is within the coverage area of the magnetic field, it closes the circuit, which means that the detector is closed. The door's opening pushes out the magnet from the sealed contact reed relay and opens the circuit. In such a way, the detector recognizes the opening.

The DoorProtect Plus set includes two constant magnets. The small one works at a distance of 1 cm, and the big one – up to 2 cm.

The detector can be positioned horizontally. If there is no need to detect opening, use only the detector part (without magnets) and disable the primary detector in the settings.

The accelerometer detects shocks and vertical deviation relative to the initial position of more than 5°. DoorProtect Plus can be installed on windows, including dormer windows, and the system can be armed when they are slightly open (disable the primary detector in the settings previously).



Attach the magnet to the **RIGHT** of the detector.

If triggered, DoorProtect Plus immediately transmits the alarm signal to the hub, activating the sirens and notifying the user and security company.

Connecting

Before starting connection

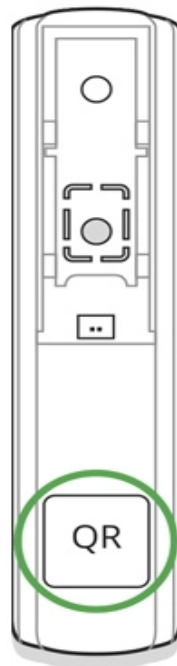
1. Following the hub user guide, install the [Ajax app](#). Create the account, add the hub, and create at least one room.
2. Switch on the hub and check the internet connection (via Ethernet cable and/or GSM network).
3. Make sure that the hub is disarmed and does not update by checking its status in the Ajax app.



Only users with administrator rights can add the device to the hub.

How to connect the detector to the hub

1. Select **Add Device** in the Ajax app.
2. Name the device, scan or type the **QR code** (located on the detector body and packaging), and select the location room.



3. Tap **Add** – the countdown will start.
4. Switch on the device.



For detection and pairing to occur, the detector should be located within the coverage area of the wireless network of the hub (at a single protected object). The connection request is transmitted for a short time: at the moment of switching on the device.

If the device failed to pair (LED blinks once per second), switch it off for 5 seconds and retry. The detector connected to the hub appears in the list of devices in the app. The update of the detector statuses in the list depends on the device ping interval set in the hub settings (the default value is 36 seconds).

States

The states screen contains information about the device and its current parameters. Find the DoorProtect Plus states in the Ajax app:

1. Go to the **Devices**  tab.
2. Select DoorProtect Plus from the list.

Parameter	Value
Temperature	Device temperature. It is measured on the processor and changes gradually. Displayed in 1°C increment. Acceptable error between the value in the app and temperature at the installation site: 2–4°C



Jeweller Signal Strength	<p>Signal strength between the hub/range extender and the opening detector.</p> <p>We recommend installing the detector in places where the signal strength is 2–3 bars</p>
Connection	<p>Connection status between the hub/range extender and the detector:</p> <ul style="list-style-type: none"> • Online – the detector is connected with the hub/range extender • Offline – the detector has lost connection with the hub/range extender
ReX range extender name	<p>Displayed when the detector works via radio signal range extender</p>
Battery Charge	<p>Battery level of the device. Displayed as a percentage</p> <p>How battery charge is displayed in Ajax apps</p>
Lid	<p>The tamper mode of the detector, which reacts to the detachment of or damage of the body</p>
Delay When Entering, sec	<p>Entry delay (alarm activation delay) is the time you have to disarm the security system after entering the room</p> <p>What is delay when entering</p>
Delay When Leaving, sec	<p>Delay time when exiting. Delay when exiting (alarm activation delay) is the time you have to exit the room after arming the security system</p> <p>What is delay when leaving</p>
Night Mode Delay When Entering, sec	<p>The time of Delay When Entering in the Night mode. Delay when entering (alarm activation delay) is the time you have to disarm the security system after entering the premises.</p> <p>What is delay when entering</p>

Night Mode Delay When Leaving, sec	<p>The time of Delay When Leaving in the Night mode. Delay when leaving (alarm activation delay) is the time you have to exit the premises after the security system is armed.</p> <p><u>What is delay when leaving</u></p>
Primary Detector	Indicates whether the opening sensor is active
External Contact	Status of the external detector connected to DoorProtect Plus
Shock Sensor	Indicates whether the shock sensor is active
Tilt Sensor	Indicates whether the tilt sensor is active
Always Active	<p>If the option is active, the detector is always in armed mode and notifies about alarms</p> <p><u>Learn more</u></p>
Chime	<p>When enabled, a siren notifies about opening detectors triggering in the Disarmed system mode</p> <p><u>What is chime and how it works</u></p>
Temporary Deactivation	<p>Shows the status of the device temporary deactivation function:</p> <ul style="list-style-type: none"> • No – the device operates normally and transmits all events. • Lid only – the hub administrator has disabled notifications about triggering on the device body. • Entirely – the device is completely excluded from the system operation by the hub administrator. The device does not follow system commands and does not report alarms or other events. • By number of alarms – the device is automatically disabled by the system when the number of alarms is exceeded (specified in the settings for Devices Auto Deactivation). The feature is configured in the Ajax PRO app.

	<ul style="list-style-type: none"> • By timer – the device is automatically disabled by the system when the recovery timer expires (specified in the settings for Devices Auto Deactivation). The feature is configured in the Ajax PRO app.
Firmware	The detector firmware version
Device ID	Device identifier
Device No.	Number of the device loop (zone)

Settings

To change the detector settings in the Ajax app:

1. Select the hub if you have several of them or if you are using the PRO app.
2. Go to the **Devices**  tab.
3. Select **DoorProtect Plus** from the list.
4. Go to **Settings** by clicking on the .
5. Set the required parameters.
6. Click **Back** to save the new settings.

Setting	Value
First field	<p>Detector name that can be changed. The name is displayed in the text of SMS and notifications in the event feed.</p> <p>The name can contain up to 12 Cyrillic characters or up to 24 Latin characters</p>
Room	Selecting the virtual room to which DoorProtect is assigned. The name of the room is displayed in the text of SMS and notifications in the event feed
Delay When Entering, sec	Selecting delay time when entering. Delay when entering (alarm activation delay) is the time you have to disarm the security system after entering the room

	<p><u>What is delay when entering</u></p>
Delay When Leaving, sec	<p>Selecting the delay time when exiting. Delay when exiting (alarm activation delay) is the time you have to exit the room after arming the security system</p> <p><u>What is delay when leaving</u></p>
Arm in Night Mode	<p>If the option is active, the detector will switch to the Armed mode when using a Night mode.</p> <p>Note that in <u>Night mode</u>, all active sensors of the detector are armed. The activation of certain sensors cannot be configured in the Night mode (for example, the tilt sensor)</p>
Night Mode Delay When Entering, sec	<p>The time of Delay When Entering in the Night mode. Delay when entering (alarm activation delay) is the time you have to disarm the security system after entering the premises.</p> <p><u>What is delay when entering</u></p>
Night Mode Delay When Leaving, sec	<p>The time of Delay When Leaving in the Night mode. Delay when leaving (alarm activation delay) is the time you have to exit the premises after the security system is armed.</p> <p><u>What is delay when leaving</u></p>
Alarm LED indication	<p>Allows you to disable the flashing of the LED indicator during an alarm. Available for devices with firmware version 5.55.0.0 or higher</p> <p><u>How to find the firmware version or the ID of the detector or device?</u></p>
Primary Detector	<p>If setting is active, the DoorProtect Plus primary detector reacts to opening/closing</p>
External Contact	<p>If setting is active, DoorProtect Plus registers external detector alarms</p>
Shock Sensor	<p>If active, shock-sensor will detect alarm after more than one impact</p>

Sensitivity	<p>Sensitivity level of the shock sensor. Three options are available:</p> <ul style="list-style-type: none"> • Low • Normal • High
Ignore Simple Impact	If active, the detector ignores single hit
Tilt Sensor	If active, sensor will detect tilt
Tilt	Selecting the normal angle of the sensor. Above this limit, the sensor detects an alarm
Tilt Alarm Delay	The number of seconds from the moment the sensor is tilted to the alarm. The value can be set from 1 second to 1 minute
Always Active	<p>If the option is active, the detector is always in armed mode and notifies about alarms</p> <p>Learn more</p>
External Contact Enabled	<p>Selecting the type of external wired detector. For the detector connected to DoorProtect Plus terminals.</p> <p>The option is available for devices with firmware version 5.53.1.0 and higher.</p>
Time before alarm, sec (available for roller shutter motion detector only)	The time in seconds during which a given number of impulses should be counted. This time is counted after the first impulse of the detector.
Impulses before alarm (available for roller shutter motion detector only)	Number of detector impulses required to raise an alarm
Alert with a siren if opening detected	If active, sirens added to the system are activated when opening detected
Alert with a siren if an external contact is opened	If active, sirens added to the system are activated during an external detector alarm
Alert with a siren if shock detected	If active, sirens added to the system are activated during a shock alarm

Alert with a siren if tilt detected	If active, sirens added to the system are activated during a tilt alarm
Chime settings	<p>Opens the settings of Chime.</p> <p>How to set Chime</p> <p>What is Chime</p>
Jeweller Signal Strength Test	<p>Switches the detector to the Jeweller signal strength test mode. The test allows you to check the signal strength between the hub and DoorProtect Plus and determine the optimal installation site</p> <p>What is Jeweller Signal Strength Test</p>
Detection Zone Test	<p>Switches the detector to the detection area test</p> <p>What is Detection Zone Test</p>
Signal Attenuation Test	<p>Switches the detector to the signal fade test mode (available in detectors with firmware version 3.50 and later)</p> <p>What is Attenuation Test</p>
User Guide	<p>Opens DoorProtect Plus User Guide in the Ajax app</p>
Temporary Deactivation	<p>Allows the user to disconnect the device without removing it from the system.</p> <p>Three options are available:</p> <ul style="list-style-type: none"> • No – the device operates normally and transmits all alarms and events • Entirely – the device will not execute system commands or participate in automation scenarios, and the system will ignore device alarms and other notifications • Lid only – the system will ignore only notifications about the triggering of the device tamper button

	<p><u>Learn more about temporary deactivation of devices</u></p> <p>The system can also automatically deactivate devices when the set number of alarms is exceeded or when the recovery timer expires.</p> <p><u>Learn more about auto deactivation of devices</u></p>
Unpair Device	Disconnects the detector from the hub and deletes its settings



How to set Chime

Chime is a sound signal that indicates the triggering of the opening detectors when the system is disarmed. The feature is used, for example, in stores, to notify employees that someone has entered the building.

Notifications are configured in two stages: setting up opening detectors and setting up sirens.

[Learn more about Chime](#)

Detectors settings

1. Go to the **Devices**  menu.
2. Select the DoorProtect Plus detector.
3. Go to its settings by clicking the gear icon  in the upper right corner.
4. Go to the **Chime Settings** menu.
5. Select the events to be notified by the siren:
 - If a door or a window is open.
 - If an external contact is open (available if the External Contact option is enabled).

6. Select the chime sound (siren tone): 1 to 4 short beeps. Once selected, the Ajax app will play the sound.
7. Click **Back** to save the settings.
8. Set up the required siren.

How to set up a siren for Chime

Indication

Event	Indication	Note
Switching on the detector	Lights up green for about one second	
Detector connection to the <u>hub</u>	Lights up continuously for a few seconds	
Alarm / tamper activation	Lights up green for about one second	Alarm is sent once in 5 seconds
Battery needs replacing	During the alarm, it slowly lights up green and slowly goes out	Replacement of the detector battery is described in the <u>Battery Replacement</u> manual

Performance testing

The Ajax security system allows conducting tests for checking the functionality of connected devices.

The tests do not start immediately but within 36 seconds by default. The starting time depends on the ping interval (the paragraph on “**Jeweller**” settings in hub settings).

Jeweller Signal Strength Test

Detection Area Test

Attenuation Test

Installing the Detector

The location of DoorProtect Plus depends on its remoteness from the hub, and obstacles hindering the radio signal transmission: walls, floors, large objects inside the room.



The device developed only for indoor use.



Check the Jeweller signal level at the installation location

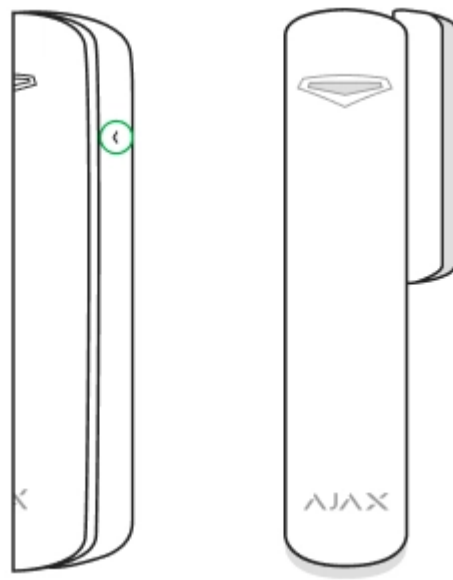
If the signal level is low (one bar), we cannot guarantee the stable operation of the detector. Take all possible measures to improve the quality of the signal. At least, move the detector: even a 20 cm shift can significantly improve the quality of signal reception.

If after moving the device still has a low or unstable signal strength, use a [radio signal range extender](#).

Do not install the detector:

1. outside the premises (outdoors);
2. nearby any metal objects or mirrors causing attenuation or screening of the signal;
3. at any places with fast air circulation (air fans, open windows or doors);
4. inside premises with the temperature and humidity beyond the range of permissible limits;
5. closer than 1 m to the hub.

Attach the magnet to the right of the detector. The side to which the magnet should be attached is marked with an arrow on the detector's body. The detector is located either inside or outside the door case (window frame).



When installing the detector in the perpendicular planes (inside the case/frame), use the small magnet from the set. The distance between the magnet and detector should not exceed 1 cm.

When positioning the parts of DoorProtect Plus in the same plane, use the big magnet. Its actuation threshold is 2 cm.

Detector Testing

Having defined the location, fix the detector and magnet with the double-sided adhesive tape and check its operation of using the Detection Zone test.

In the test mode, the DoorProtect Plus LED lights continuously, switching off for a second, if the detector is triggered. Check the correct operation of the device by opening/closing the door several times.

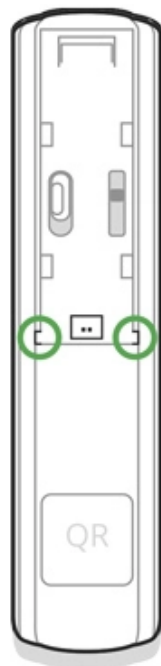
Connecting a Third-Party Wired Detector

A wired detector with an NC (normally closed) contact type can be connected to DoorProtect Plus using the in-built terminal clamp.



We recommend installing the wired detector at a distance no longer than 1 meter to DoorProtect Plus. Longer wire length increases the risk of its damage and reduces the quality of communication between the detectors.

To put out the wire from the detector body, break out the plug:



If the connected wired detector is triggered, you receive the notification.

To make sure the alarm is raised when the roller shutter is opened, connect the wired roller shutter motion detector with the NC (normally closed) contact to DoorProtect Plus. The function is available for the devices with firmware version 5.53.1.0 and higher.

Installation

Before installing the detector, make sure that you have selected the optimal location that follows the guidelines of this manual!

1. Fix the SmartBracket attachment panel using bundled screws. If you use any other attachment tools, make sure that they do not damage or deform the attachment panel.



Use double-side adhesive tape only for temporary attachment of the detector. The tape runs dry with time, which can cause falling, false triggering, and detector malfunction.

2. Put the detector on the attachment panel. When the detector is fixed in SmartBracket, it blinks with LED, signaling that the tamper is closed. If LED doesn't blink after fixing in SmartBracket, check the status of the tamper in the Ajax app and then the fixing tightness of the panel.



If someone detaches the detector from the surface or takes it off the attachment panel, the security system notifies you.

3. Put the magnet on the attachment panel.

Maintenance

Check the operational capability of the detector regularly. Clean the detector body from dust, spider web, and other contaminants as they appear. Use soft dry napkin suitable for tech equipment.

Do not use any substances containing alcohol, acetone, gasoline, and other active solvents to clean the detector.

The battery life depends on its quality, detector triggering frequency, and ping interval by the hub.

If the door opens 10 times a day and the detector ping interval is 60 seconds, then DoorProtect Plus operates 7 years from the pre-installed battery. For instance, a 12-seconds ping interval reduces the battery life to 2 years.

How long Ajax devices operate on batteries, and what affects this

If the detector battery is low, the system notifies the user, and the LED indicator smoothly lights up and goes off if a glass break is detected or the tamper is triggered.

Battery Replacement

Tech specs

Detector actuation threshold	1 cm (small magnet) 2 cm (big magnet)
Sensor resource	2,000,000 openings
Tilt sensor activation threshold	5° or more (customizable)
Shock sensitivity	3 levels
Ignore first shock option	Yes
Tamper protection	Yes
Radio communication protocol	Jeweller <u>Learn more</u>
Radio frequency band	866.0 – 866.5 MHz 868.0 – 868.6 MHz 868.7 – 869.2 MHz 905.0 – 926.5 MHz 915.85 – 926.5 MHz 921.0 – 922.0 MHz Depends on the region of sale.
Compatibility	Operates only with all Ajax <u>hubs</u> , and <u>radio signal range extenders</u>

Maximum RF output power	Up to 20 mW
Modulation of the radio signal	GFSK
Radio signal range	Up to 1,200 m (any obstacles absent)
Socket for connecting wire detectors	Yes, NC
Power supply	1 battery CR123A, 3 V
Battery life	Up to 5 years
Installation method	Indoors
Protection class	IP50
Operating temperature range	From -10°C to +40°C
Operating humidity	Up to 75%
Dimensions	Ø 20 × 90 mm
Weight	29 g
Service life	10 years
Certification	Security Grade 2, Environmental Class II in conformity with the requirements of EN 50131-1, EN 50131-2-6, CLC/TS-50131-2-8, EN 50131-5-3

Compliance with standards

Complete Set

1. DoorProtect Plus
2. SmartBracket mounting panel
3. Battery CR123A (pre-installed)
4. Big magnet
5. Small magnet
6. Outside-mounted terminal clamp
7. Installation kit
8. Quick Start Guide

Warranty

Warranty for the “AJAX SYSTEMS MANUFACTURING” LIMITED LIABILITY COMPANY products is valid for 2 years after the purchase and does not apply to the pre-installed battery.

If the device does not work correctly, you should first contact the support service—in half of the cases, technical issues can be solved remotely!

[The full text of the warranty](#)

[User Agreement](#)

Technical support: support@ajax.systems

Subscribe to the newsletter about safe life. No spam

Subscribe